

RFM

THE MIDLANDS MART

— RUGBYFARMERSMART.COM —

The Charolais Pavilion, Avenue M, Stoneleigh Park,
Kenilworth, Warwickshire CV8 2RG
02476 697731 | www.rugbyfarmersmart.com | 43/139/8013
Office hours: Monday to Friday - 9.00am - 5.00pm
Opening Time: Gates open at 5.30am until further notice

MARKET REPORT FOR MONDAY 9TH MARCH 2026

MARKET AT A GLANCE

Prime Steers to 406p/kg & £2789
Prime Heifers to 410p/kg & £2753
Prime Bulls to 355p/kg & £1931
Cows to 282p/kg & £2414
Hogg SQQ 414.29p/kg (1434 avg £177)
Hoggs to 459p/kg & £212
Ewes to £340 (634 Avg £170.61)



WE WILL BE A **RED** MARKET THE FIRST MONDAY
OF EVERY MONTH. THE REMAINING MONDAYS
WITH BE A **GREEN** MARKET

Catalogues & Entry Forms available by post, email or on the website
www.rugbyfarmersmart.com | admin@rugbyfarmersmart.com

**PLEASE COULD ALL VENDORS BOOK IN STOCK,
EITHER BY A QUICK CALL, TEXT OR EMAIL THANK YOU!**

Office: 02476697731 | Email: admin@rugbyfarmersmart.com | Tom: 07774723758
Tim Webster: 07437101163 | Martin Lloyd: 07399794399

Sunday lairage is now open from 9am-3:00pm
Gates close 3:00pm **STRICTLY.**

VET ATTESTATIONS

From 13th April 2024, all producers selling livestock for slaughter will require a Veterinary Attestation, or evidence of membership of a qualifying assurance scheme. Producers should prepare now for the changes Follow the link below to our FAQs for livestock markets and producers to find out more. <https://www.laa.co.uk/news/5126/veterinary-attestations-faqs-for-livestock-markets->

WELFARE STATEMENT

Following a meeting with Warwickshire Trading Standards & the FSA on Monday we have been asked to highlight the Welfare Issues being reported from the Abattoirs regarding Cull Ewes. These mainly relate to MASTITIS & LAMENESS. Condition Score i.e being very thin.

Please remember that an animal must be fit for the intended journey, it should not be ill, injured or severely lame i.e. must be full weight bearing.

These sheep are being rejected at abattoirs around the Country

Collective machinery sale on behalf of Mr A Baughan & others.

SOLD SEPT '26



SOLD SEPT '26



SOLD SEPTEMBER 2025:
Kidd 6m Topper £7,500
Renault Tractor £7,000
Nuffield Universal £2,800
Nuffield Universal Rowcrop £2,800



Oak Farm, Upper Boddington, Nr Daventry,
Northamptonshire, NN11 6DW.

The sale will commence at 10.30am

Entries are invited in the following categories:

Tractors, telehandlers, diggers, trailers, vehicles,
arable, grassland and livestock machinery.

Together with: Excavators, dump trucks, mini diggers,
telehandler and loader attachments, bowsers,
generators & agricultural requisites.

Plus: Livestock equipment, workshop equipment,
agricultural equipment and rural bygones.

For an entry form or more information please contact

James on 07570 692076 or Gilly on 07921 511852.

To be sold by auction on Saturday 21st March 2026 at 10.30am.

CATTLE : 78 Forward



Prime Cattle -

A mixed show again, and the trade holding firm against further drops in dead weight price. Reportedly slow steak meat and joint sales hampering butchers but a rise in dice, mince and trim helping bolster meat movement. Spec cattle remaining a very sharp trade, and some strong gross figures today for some heavyweight sorts.

Steers -

A sharp shop steer from Pete Jarrom selling to 406p/kg with tidy Blues Ed Hull selling to 394p/kg. PM Jarrom saw Limousins to 386p/kg with WJ Russell & Son seeing 380p/kg for smart Limousins.

Top grossing bullock seeing some heavyweight dairy bred Blues from DJ Hull & Partners to £2788, with the same home to £2742. Pete Jarrom sold to £2598, with Blues from DJ Hull to £2533.

Heifers -

Some sweet butchers heifers forward today a trade still sharp to match. Heifers with weight to 410p/kg from DTP Walters & Partners, with Pete Jarrom seeing Limousins to 408p/kg, with Dave Whitlock to the same figure for Limousin x heifers.

Top grossing heifers saw Parry Walters selling to £2752 with weight, with the same home selling to £2706, £2656 and £2616. Heavyweight Angus girls from DJ Hull sold to £2448, with Dave Whitlock selling to £2419. OTM Simmentals from Adrian Swinnerton saw £2282 with Pete Jarrom to £2260.

Bulls -

A very mixed show of bulls to include the good, the bad and the indifferent. Top saw little Charolais to 355p/kg from JC Bostock, with a top gross from the same home of £1951.

Cows -

H Smith & Son sold to a top of 282p/kg for heavyweight Limousin cows, matching with fed cows from DJ Hull. Top grossing cows also to H Smith & Son to £2413, with Limousin cows from DJ Hull to £2250.

Auctioneer: Martin Lloyd

STEERS

Top prices per Kilo

Limousin x	640kg	406ppk	PM Jarrom, Leicester
British Blue	696kg	394ppk	DJ Hull & Partners, Southminster
Limousin x	612kg	386ppk	PM Jarrom, Leicester
Limousin x	618kg	380ppk	WJ Russell & Son, Kytes Hardwick
Simmental	714kg	340ppk	WJ Russell & Son, Kytes Hardwick

Top prices per Head

British Blue	866kg	£2789	DJ Hull & Partners, Southminster
British Blue	696kg	£2742	DJ Hull & Partners, Southminster
Limousin x	640kg	£2598	PM Jarrom, Leicester
British Blue	812kg	£2533	DJ Hull & Partners, Southminster
British Blue	834kg	£2519	DJ Hull & Partners, Southminster

HEIFERS

Top prices per Kilo

Limousin x	660kg	410ppk	DTP Walters & Partners, Rugby
Limousin x	554kg	408ppk	PM Jarrom, Leicester
Limousin x	596kg	406ppk	DJ Whitlock, Coventry
Limousin x	656kg	405ppk	DTP Walters & Partners, Rugby
Limousin x	654kg	400ppk	DTP Walters & Partners, Rugby

Top prices per Head

Limousin x	744kg	£2753	DTP Walters & Partners, Rugby
Limousin x	660kg	£2706	DTP Walters & Partners, Rugby
Limousin x	656kg	£2657	DTP Walters & Partners, Rugby
Limousin x	654kg	£2616	DTP Walters & Partners, Rugby
Aberdeen Angus	800kg	£2448	DJ Hull & Partners, Southminster



HOGGS 1434 FORWARD

SQQ 414.29P/KG AVG £177 TOP £212

Hoggs;

To see is to believe. New Accounts at ringside and a massive Trade throughout with an SQQ of 414p/kg and all in Avg of £177!!!. All customers needing numbers and willing to chase meat. Simply flying and Hoggs on the hook now passing £8.20.

Best Hoggs in huge demand selling to 4.59p/kg or 40.5kg from Humphrey Livestock with Keith Crabtree 458p/kg 40kg. D Taylor up from Bicester 40kg at 450p/kg and R Avery, Thame 40kg at 449p/kg. £4 no barrier today and good export weight Hoggs trading 410 -420p/kg with lightweight City with meat all over 420p/kg and better bred of all weights trading easily over 430p/kg. Simply flying.

Weight just as wanted and selling to a top of 49kg at 429p/kg and 46.5kg at 426p/kg for full meat from Humphrey Livestock also selling 46kg at 422p/kg. Weighted first cross Hoggs 50-52kg 360 - 378 and heavier or leaner less money but still totting up well. Hoggs over 54kg though at a disadvantage albeit mainly staggy.

In the lump an all in Avg of £177

Export Hoggs to £194 for two pens in a row at 44kg from the master of Beltex K Crabtree with Humphrey Livestock selling 42.5kg £190 and R Richins & N Deeley coming up the M40 to see £190 at 43kg. Export Hoggs almost all over £160!!!

Top of the tree though £212 for Steve Timms with 61kg Blue Texels and Humphrey Livestock 49kg at £210 and S Timms also £210. Laban Partners Dutch Spotted at £204. Breaking £200 today also Passmore & Nunnerley, W J Prime, Milkwood arms, Newbury, S J Timms and F A Walker all over £200.

Trade simply flying and as a result of shortages to fulfil Europe's demand.

Auctioneer: Tom Wrench

HOGG SQQ 414.29 SQQ p/kg

Per Kilo **under 45.5kg**

Beltex	40.5kg	459ppk	Humphrey Livestock, Brackley
Beltex	40kg	458ppk	K Crabtree, Great Horwood
Beltex	28kg	454ppk	K Crabtree, Great Horwood
Beltex	40kg	450ppk	D Taylor, Bicester
Beltex	40.5kg	449ppk	R Avery, Longwick

Per HEAD

Beltex	44kg	£194	K Crabtree, Great Horwood
Beltex	44kg	£194	K Crabtree, Great Horwood
Texel	42.5kg	£190	Humphrey Livestock, Brackley
Texel	43kg	£190	R Richins, Old Marston
Texel	43.5kg	£190	Humphrey Livestock, Brackley

Per Kilo **over 45.5kg**

Beltex	49kg	429ppk	Humphrey Livestock, Brackley
Texel	46.5kg	426ppk	Humphrey Livestock, Brackley
Beltex	46kg	422ppk	Humphrey Livestock, Brackley
Texel	45.5kg	418ppk	Passmore & Nunnerley, Banbury
DS	46.5kg	417ppk	A Green, Lutterworth

Per HEAD

Blue Texel	61.5kg	£212	SJ Timms, Brandon
Beltex	49kg	£210	Humphrey Livestock, Brackley
Blue Texel	59kg	£210	SJ Timms, Brandon
DS	66kg	£204	Laban Partners, Gilmorton
Texel	54kg	£202	Humphrey Livestock, Brackley

CULL EWES: 623 FORWARD top at £340



A much better yarding of genuine farmers Ewes meeting a massive trade throughout and an all in Avg of a massive £171!!! This includes a fair few Swaledales and Mules within the Avg.

Top for the day a horse of a Texel Ewe from AA Peck across from Norfolk selling to £340 with others at £310. Northamptonshire's R Kellett next with Texel x Beltex £265, £252 & £245 with D Wadland £244 & £243. Weighted Ewes trading today all north of £200 and the majority over £220. Suffolks to £239 for Minshull Farms Ltd and £212 for Messrs Peck. No real big Suffolks but all generally around £200 plus. Mules to a massive £198 for C Naylor and £192 for WS Gabb Ltd with weighted Mules over £170. Middle of the road Mules £130 plus.

A serious trade and over 1000 needed next week.

Auctioneer: Tom Wrench

EWES

Texel	£340	AA Peck, Norwich	Beltex	£252	R Kellet, Castle Ashby
Texel	£310	AA Peck, Norwich	Beltex	£245	R Kellet, Castle Ashby
Beltex	£265	R Kellet, Castle Ashby	Continental	£244	DS & LE Wadland, Daventry



AUTO GATES LTD

Bridge Farm, Holt Lane, Ashby Magna, LE17 5NJ

Trevor 07498993897/01455 202791

Email: tjautogate@gmail.com



**A sawmill dispersal sale on behalf of
Astley Fencing Ltd, Cosby, Lutterworth, Leicestershire, LE9 1RH**

To include: 2015 Manitou MLT 741 PS Telescopic Handler,
2021 Manitou M30-4 Rough Terrain Forklift, 2015 Manitou M30-4
Rough Terrain Forklift, 2008 Manitou M26-2 Rough Terrain Forklift,
2023 Manitou MI30G Gas Forklift, Manitou MB 20A Rough Terrain
Forklift.

Together with: David Brown 995 2WD Tractor with Loader, 2019 LDV
Flatbed Van, 2018 Peugeot Flatbed Van, Two 2008 Fiat Ducato 120
Multijet Flatbed Vans, 2006 Hyundai Terracan Car,
Eddie Stobart Vintage Trailer.

Plus: Timber Processing Equipment, Curtain Sided Trailers, Loader
Attachments, 3-Phase Electric Conveyors, Building Materials
& Ancillary Equipment.

To be held on the premises on
Saturday 28th March 2026 at 10.30am.

Chartered Surveyors - Estate Agents - Letting Agents



Oakhill Farm, Goldicote, Stratford Upon Avon

**For sale by Private Treaty - Guide Price
£1,500,000**

Approximately 92 acres of arable and woodland with stunning views. 2 agricultural buildings and a log cabin. Also Class Q permission for a substantial residential dwelling.

Call Sophie Wrench for more details.

T: 07538 439493

E: Sophie@margetts.co.uk



MARGETTS
ESTABLISHED 1806

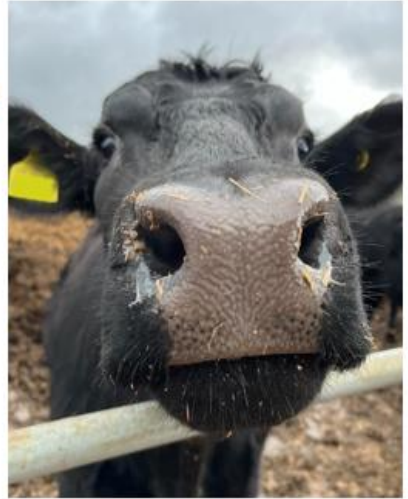


Calling All English beef finishers!

I am a student at Harper Adams conducting research into English beef farmer willingness to join integrated beef schemes.

If you have a spare 10 minutes,
I would greatly appreciate your time to
fill in my anonymous questionnaire.

You can access the survey from the QR
code below.



Harper Adams
University



Rix
OAKLEYS

**Your Local
Independent Farm
Fuels Supplier**



Gas Oil
& Diesel



Lubricants
& Additives



Fuel Tanks



Heating Oil



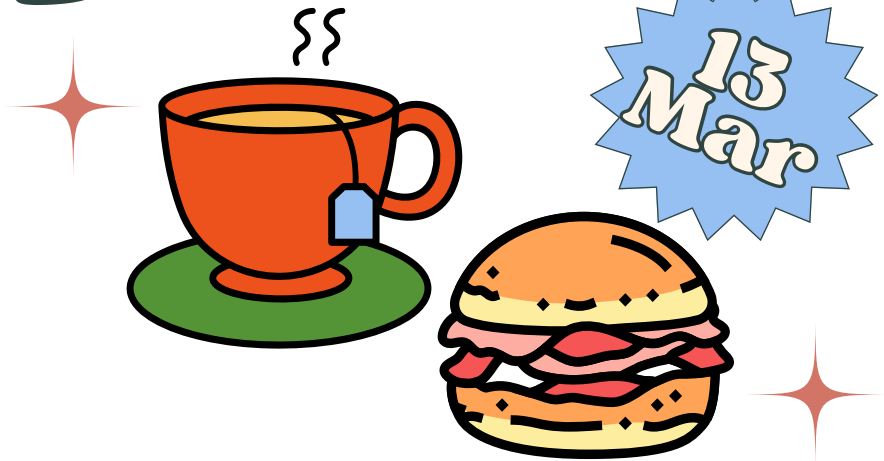
AdBlue®

Call for a quote on:
01675 437557

www.rix.co.uk | midlands@rix.co.uk

ORGANISED BY
THE WARWICKSHIRE BREAKFAST BUTTY VAN PROJECT

FARMER'S BREAKFAST



**JOIN US FOR A BACON ROLL AND A
CUPPA FROM 10:30AM TO 12NOON**

***BY KIND INVITATION OF PAT MILNER
TOLLDISH HALL FARM, PARROTS GROVE,
COVENTRY, CV2 1NR***

Warwickshire Breakfast Butty Van is an initiative from the Methodist
Church West Midlands District Borderlands Ecumenical Chaplaincy
Supported by Addington Fund



4
YEARS

Farm insurance, the way it should be

We're an independent, family run insurance broker that prides itself on long term relationships with clients. This is supported by our team's extensive knowledge and experience of farming and the countryside. Covering the Home Counties, Midlands, South East and South West, we are insurance partners for your farm, agri-business or equestrian enterprise.



Farm & Equine **01865 844985**
www.county-insurance.co.uk/farms

County
Insurance Services 



Here to listen and support you

Contact The Farming Community Network
to speak in confidence with a sympathetic
person who understands farming life.

Call 03000 111 999

Email help@fcn.org.uk

(Helpline open 7am-11pm, 365 days of the year)

FCN | THE FARMING
COMMUNITY
NETWORK

Berryfields Farm
**BERRYSTOCK
FEEDS**



**PROVIDING CATTLE
AND SHEEP FEEDS FOR
THE MODERN MARKET**



Do You Want?

- ◆ HIGH PERFORMANCE
- ◆ COST EFFECTIVE
- ◆ FULLY ASSURED
- ◆ COMPLETE FEEDS
- ◆ INTEGRATED FEEDING SYSTEMS

Then contact **BERRYSTOCK FEEDS:**

Tel: 01788 890320 E-Mail: admin@berryfieldsfarm.co.uk

Web: www.berrystockfeeds.co.uk

UFAS 350

DO IT THE BERRYSTOCK WAY



WE COVER SMALL FARMS, LARGE FARMS AND EVERYTHING IN BETWEEN

**From sheep farmers to arable farmers.
Flower growers to poultry farmers.**

We're proud to insure over 70% of UK farms with our Farm Select insurance. But we want more farms to benefit from our great cover and local service. That's why we've introduced Farm Essentials insurance - designed to meet the needs of smaller farms.

As your local agency, we are close by and can provide expert advice and hands-on support when you need it.

Call **Coventry Office**
on **02476 444519**

NFU Mutual, 6 Eastwood Business Village,
Harry Weston Road, Binley Business Park,
Coventry, CV3 2UB



NFU Mutual
INSURANCE | PENSIONS | INVESTMENTS